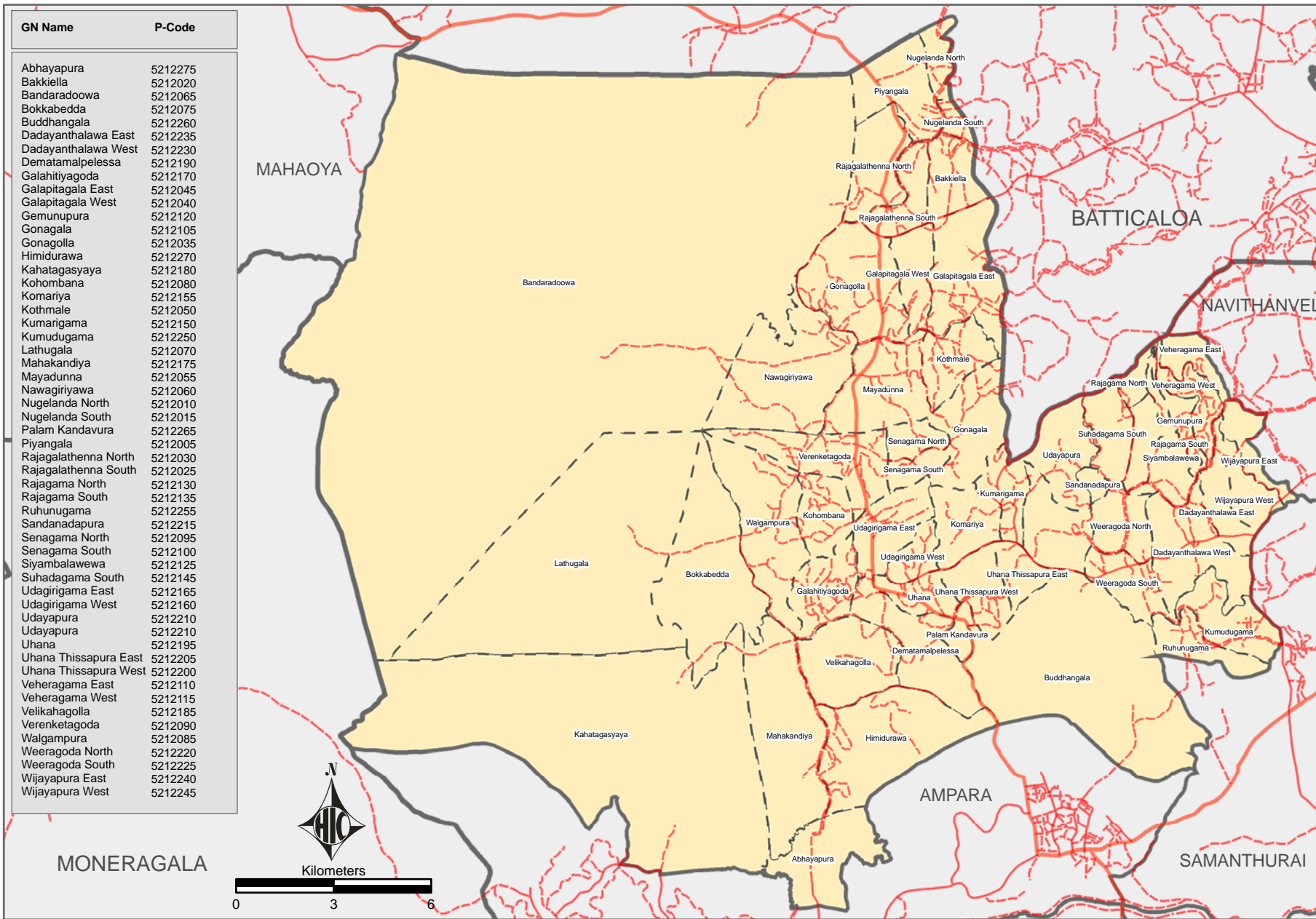


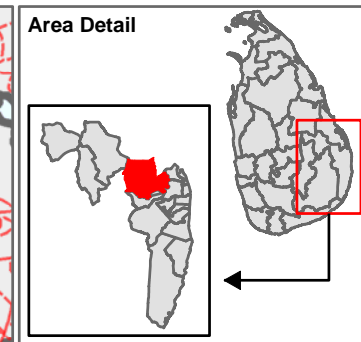
Administrative Map

DISTRICT: Ampara

DS: Uhana



GN Name	P-Code
Abhayapura	5212275
Bakkella	5212020
Bandaradoowa	5212065
Bokkabedda	5212075
Buddhangala	5212260
Dadayanthalawa East	5212235
Dadayanthalawa West	5212230
Dematamalpelessa	5212190
Galahitiyagoda	5212170
Galapitagala East	5212045
Galapitagala West	5212040
Gemunupura	5212120
Gonagala	5212105
Gonagolla	5212035
Himidurawa	5212270
Kahatagasyaya	5212180
Kohombana	5212080
Komariya	5212155
Kothmale	5212050
Kumarigama	5212150
Kumudugama	5212250
Lathugala	5212070
Mahakandiya	5212175
Mayadunna	5212055
Nawagiriya	5212060
Nugelanda North	5212010
Nugelanda South	5212015
Palam Kandavura	5212265
Piyangala	5212005
Rajagalathenna North	5212030
Rajagalathenna South	5212025
Rajagama North	5212130
Rajagama South	5212135
Ruhunugama	5212255
Sandanapura	5212215
Senagama North	5212095
Senagama South	5212100
Siyambalawewa	5212125
Suhadagama South	5212145
Udagirigama East	5212165
Udagirigama West	5212160
Udayapura	5212210
Udayapura	5212210
Uhana	5212195
Uhana Thissapura East	5212205
Uhana Thissapura West	5212200
Veheragama East	5212110
Veheragama West	5212115
Velikahagolla	5212185
Vorenketagoda	5212090
Walgampura	5212085
Weeragoda North	5212220
Weeragoda South	5212225
Wijayapura East	5212240
Wijayapura West	5212245



Legend

- District Boundary
- DS Boundary
- GN Boundary
- Main Road
- Minor Road
- Track Road

Data source(s):
Survey Department, Gvt. of Sri Lanka

Produced on:	09-01-2006
Projection / Datum	Transverse Mercator Kandawala
GLIDE number	TS 2004-0001470LKA
Admin boundaries provided by:	Survey Department, Gvt. of Sri Lanka

MapNumber: HIC/LK/Ampara/Geographic/063 /V1
 This map is designed for printing on A4 size
 The boundaries, names and the designations used on this map do not imply official endorsement or acceptance by the United Nations.